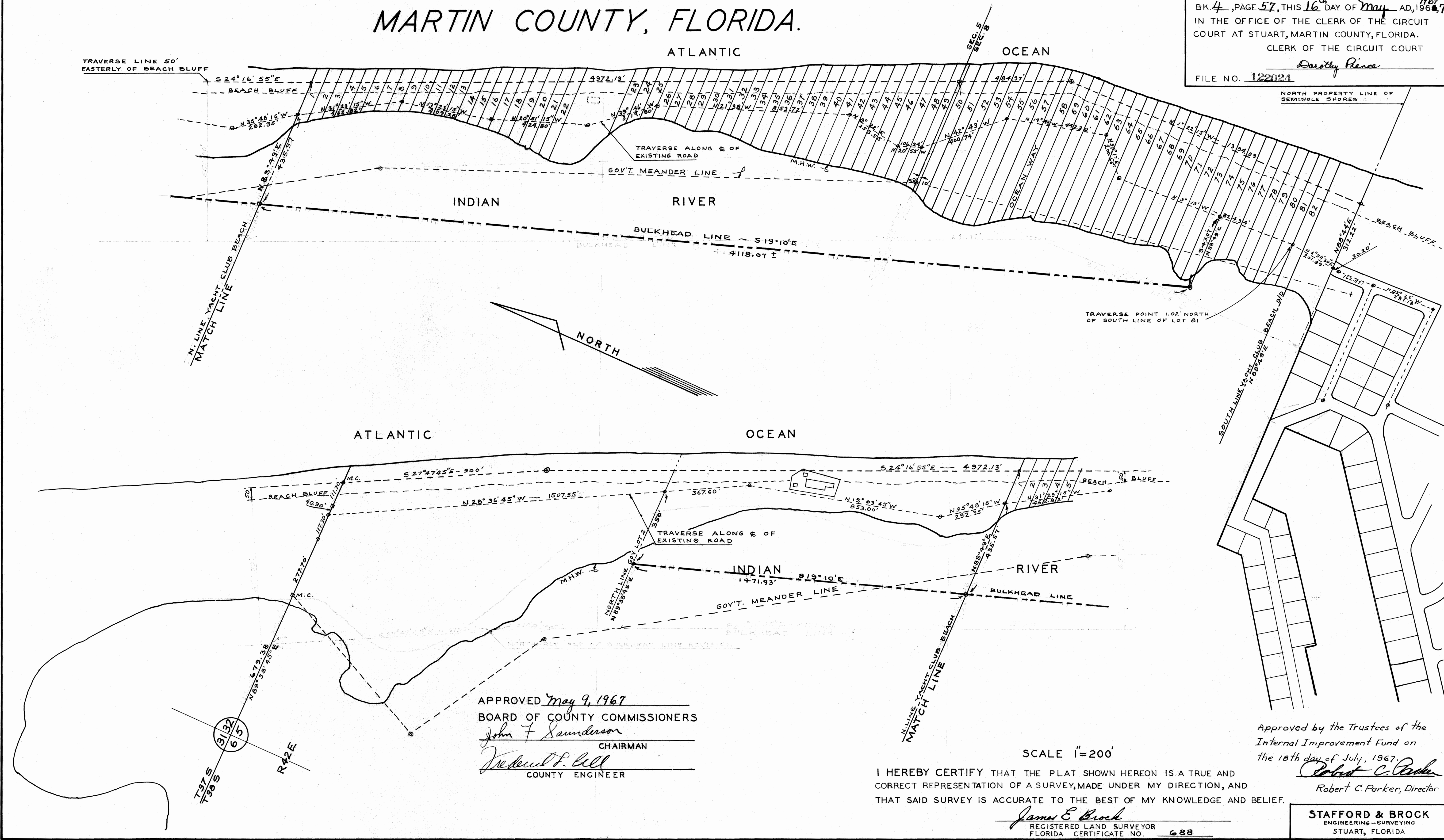


REVISED HUTCHINSON ISLAND BULKHEAD LINE MARTIN COUNTY, FLORIDA.

FILED & RECORDED
MAY 16 PM 3:16
COUNTY PUBLIC CLERK

I HEREBY CERTIFY THAT I HAVE
EXAMINED THE ATTACHED PLAT, AND FIND THAT IT
COMPLIES IN FORM WITH CHAPTER 177 FLORIDA
STATUTES, AND WAS FILED FOR RECORD IN PLAT
BK 4, PAGE 57, THIS 16th DAY OF May, AD, 1967
IN THE OFFICE OF THE CLERK OF THE CIRCUIT
COURT AT STUART, MARTIN COUNTY, FLORIDA.
CLERK OF THE CIRCUIT COURT
Dorothy Preece
FILE NO. 122024



APPROVED May 9, 1967
BOARD OF COUNTY COMMISSIONERS
John F. Sanderson
CHAIRMAN
Medford P. Bell
COUNTY ENGINEER

I HEREBY CERTIFY THAT THE PLAT SHOWN HEREON IS A TRUE AND
CORRECT REPRESENTATION OF A SURVEY, MADE UNDER MY DIRECTION, AND
THAT SAID SURVEY IS ACCURATE TO THE BEST OF MY KNOWLEDGE AND BELIEF.

SCALE 1"=200'

James E. Brock
REGISTERED LAND SURVEYOR
FLORIDA CERTIFICATE NO. 688

Approved by the Trustees of the
Internal Improvement Fund on
the 18th day of July, 1967.

Robert C. Parker
Robert C. Parker, Director

STAFFORD & BROCK
ENGINEERING-SURVEYING
STUART, FLORIDA